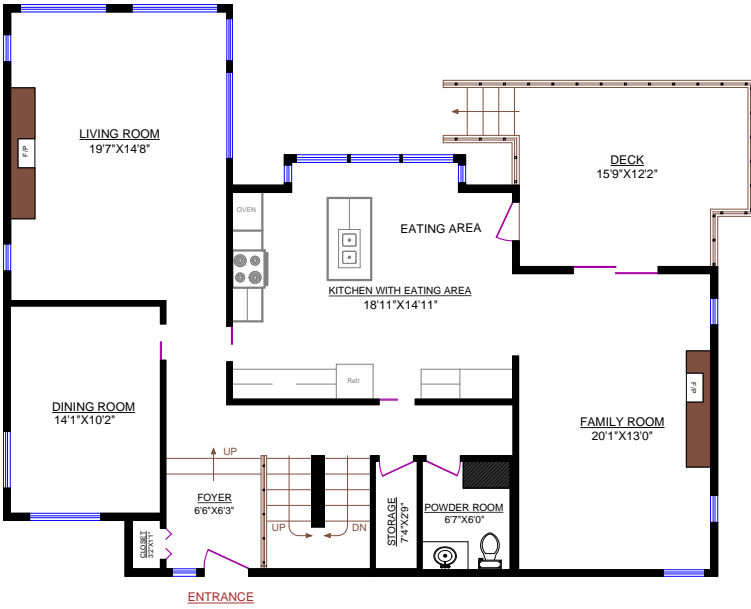


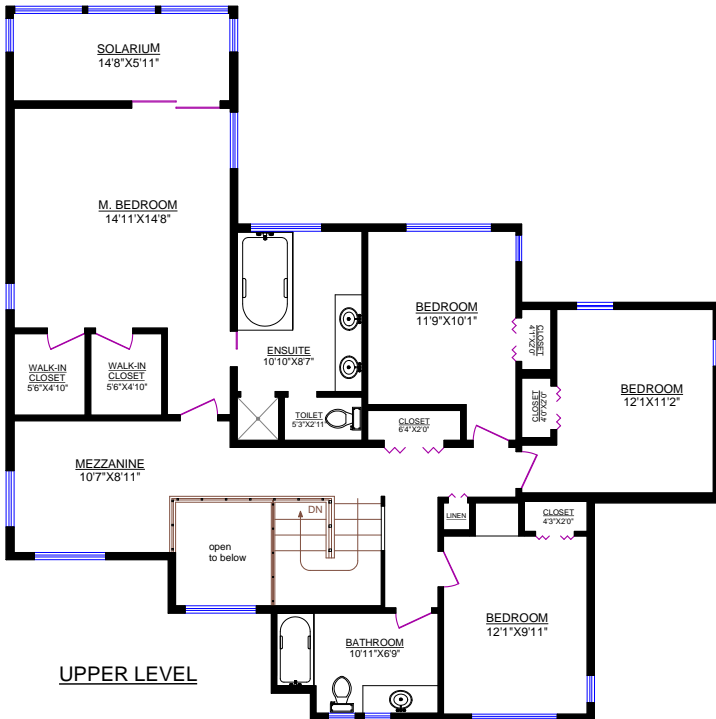
5526 WOODCHUCK PLACE, NORTH VANCOUVER

Main Floor: 1,394 sq.ft. OTHER AREAS:
 Upper Level: 1,342 sq.ft. Deck: 184 sq.ft.
 Solarium: 101 sq.ft. Garage: 540 sq.ft.
 Lower Level*: 1,369 sq.ft.
 TOTAL: 4,206 sq.ft.

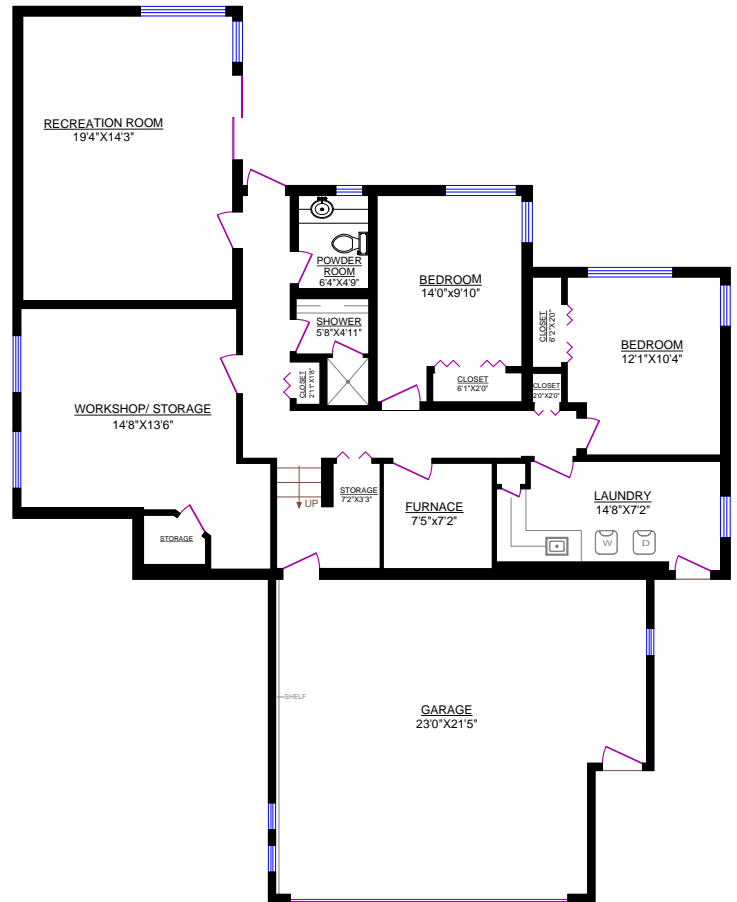
* Incl. Unfin. Area: 319 sq.ft.



MAIN FLOOR



UPPER LEVEL



LOWER LEVEL